

# Digital Deliverables Highway Contractor Panel Discussion

The logo features a white rectangular box with a thin black border, centered over a background of interlocking gears. The gears are rendered with a teal-to-yellow gradient. The text inside the box is as follows:

**2024**  
PARTNERING  
CONFERENCE  
— acec-ky —  
kytc \* fhwa

# Mentimeter

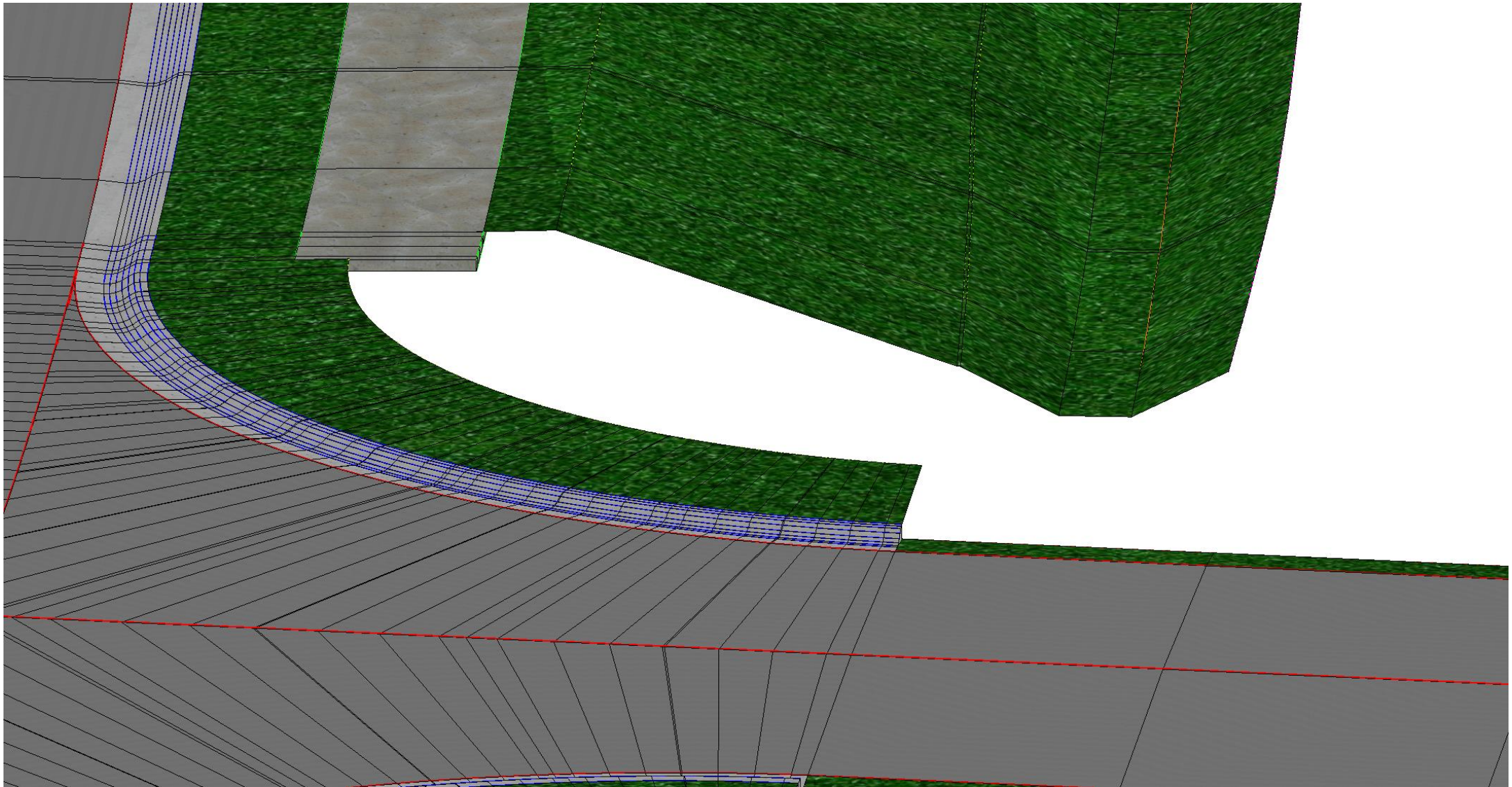


# Pre-Letting (Project Development)

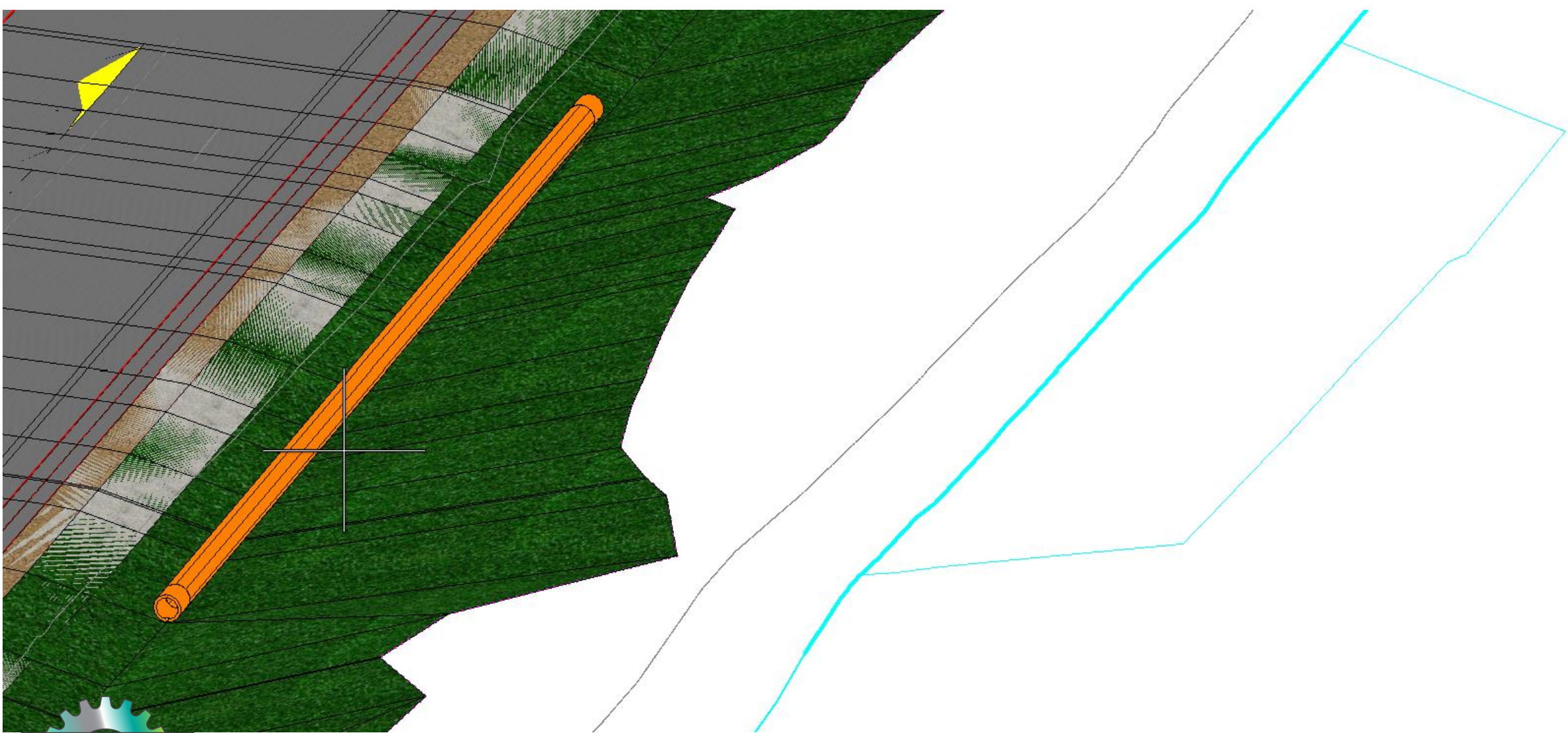
Where is design effort best expended during the development phase to provide a level of detail that minimizes risk during the delivery phase?

To help answer this question, let's look at some modeling examples from KYTC projects.



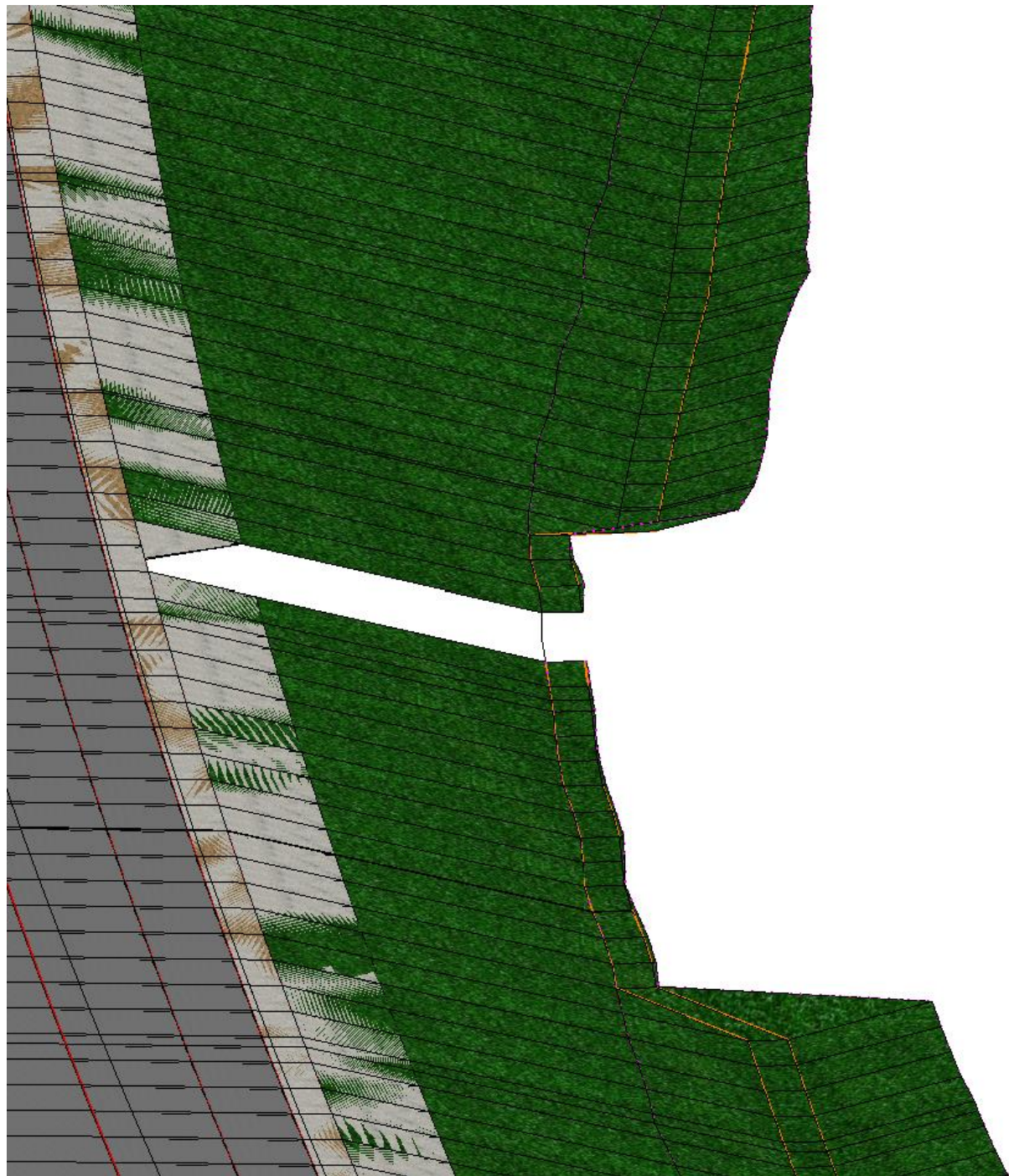






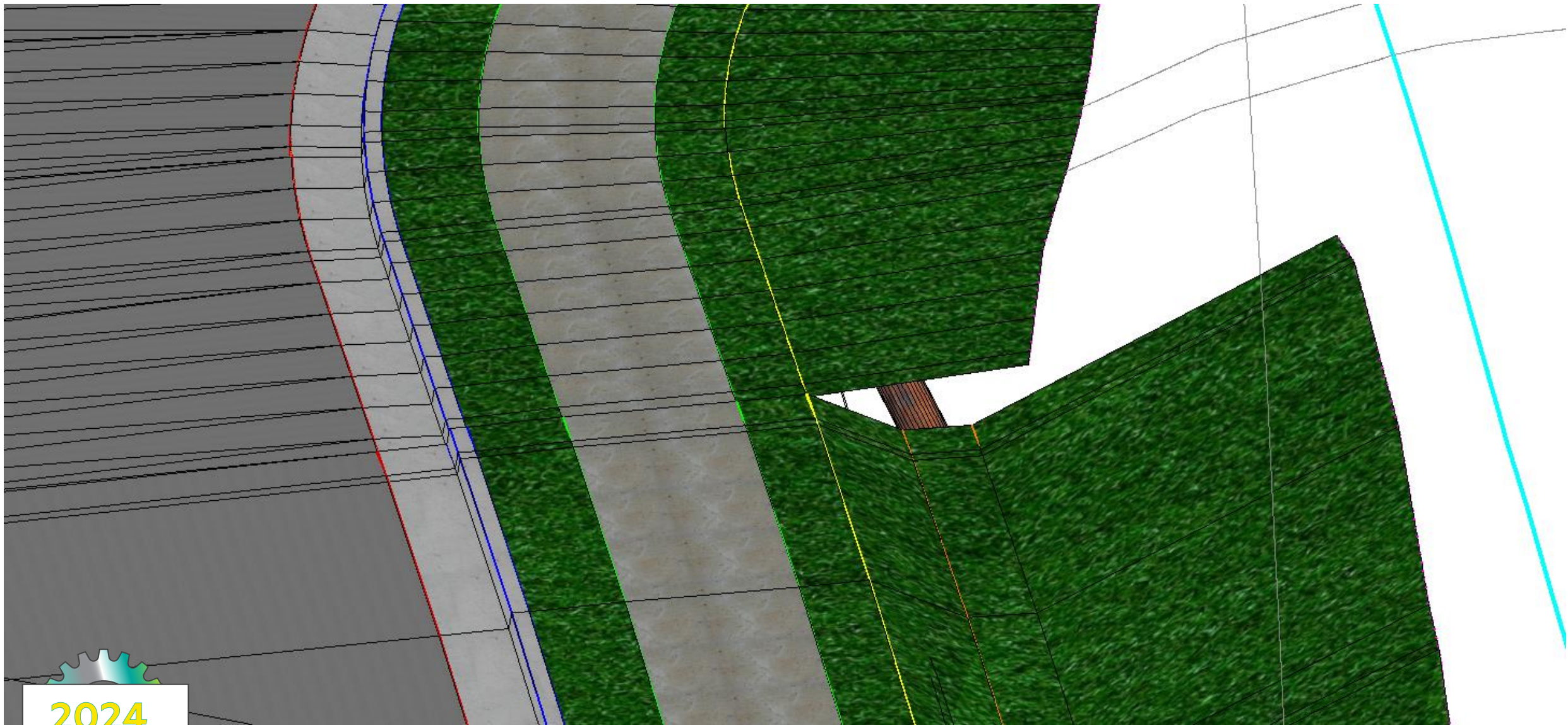
**2024**  
**PARTNERING**  
**CONFERENCE**  
— acec-ky —  
kytc • fhwa





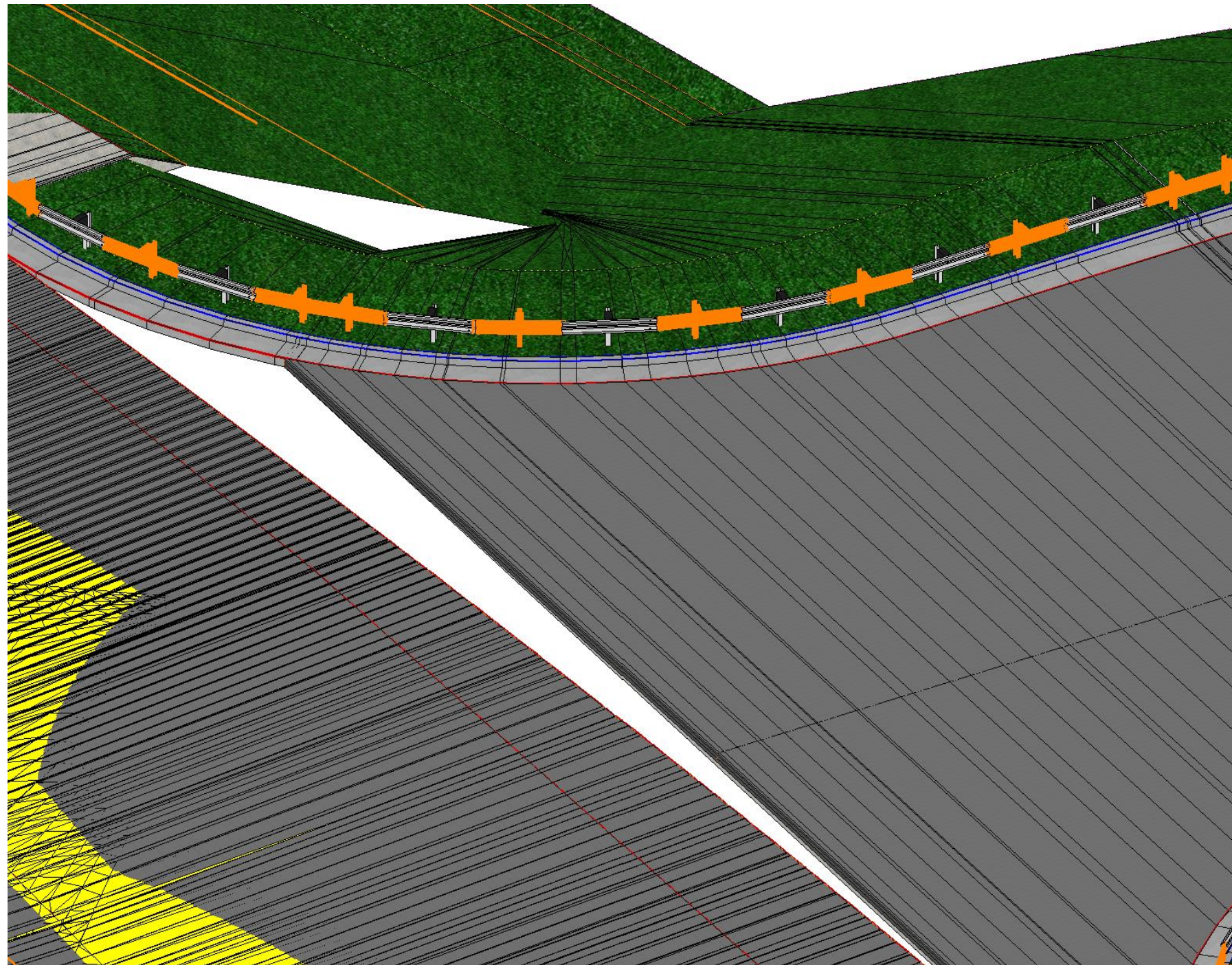
**2024**  
**PARTNERING**  
**CONFERENCE**  
— acec-ky —  
kytc • fhwa





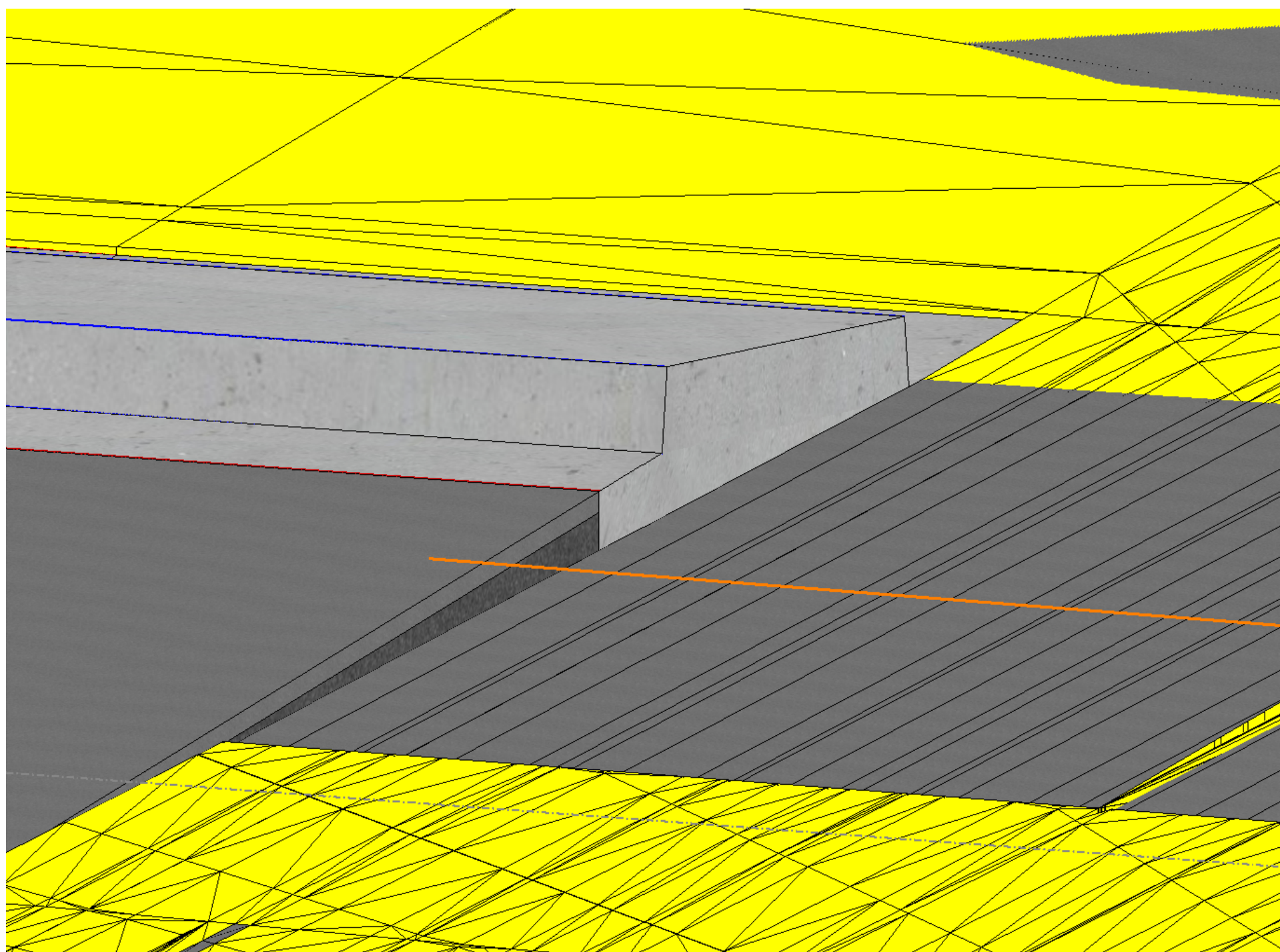
**2024**  
**PARTNERING**  
**CONFERENCE**  
— acec-ky —  
kytc • fhwa





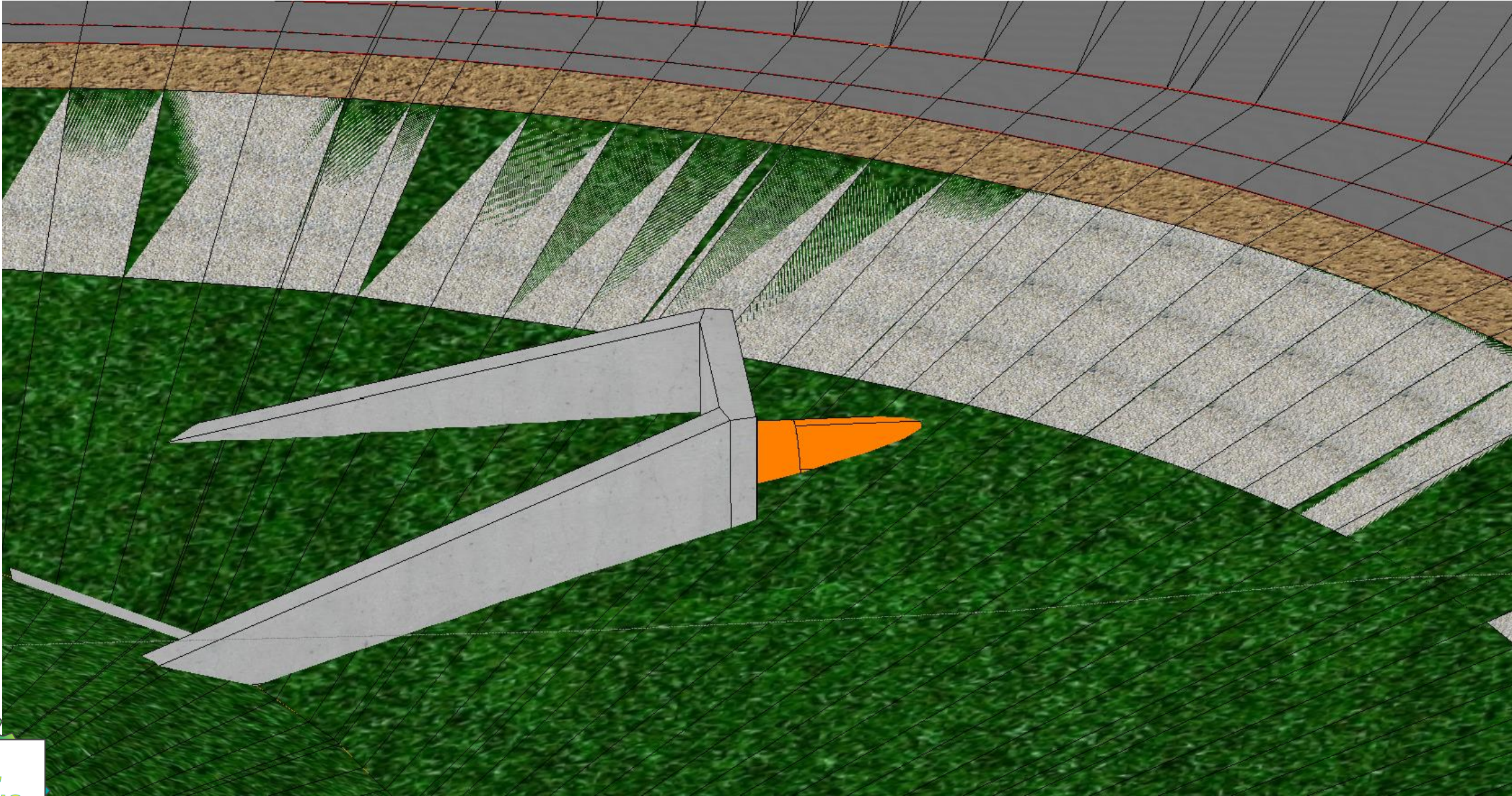
**2024**  
**PARTNERING**  
**CONFERENCE**  
— acec-ky —  
kytc • fhwa





**2024**  
**PARTNERING**  
**CONFERENCE**  
— acec-ky —  
kytc • fhwa





**2024**  
**PARTNERING**  
**CONFERENCE**  
— acec-ky —  
kytc \* fhwa



# Letting

Multiple projects to prepare bids for, so there's only time for a quick review of digital files.

What file or information in the EED package is most critical for your internal operations? Is there a preferred file format or formats for digital information to be delivered in that you find works best for your workflows?



# Active Construction

There are many different operations on a transportation construction project. One of the benefits of digital information is that it allows for the use of Automated Machine Guidance (AMG) equipment, which is particularly beneficial for earthwork operations.

Can you speak at a high level as to how you work with the digital design information so that it is usable for your field crews? Are there other operations besides earthwork where machine control processes can benefit your operations?





# Active Construction

One essential element in the project delivery phase is the verification of the work performed. As technology continues to adapt, methodologies and workflows to verify construction also change.

How do your companies currently verify that the work performed is in line with the design intent or how do you envision that the verification process will change in the near future?



# Contractor Comments

What are 1-2 things that you would like designers to know or understand better?





# AM Session QR Code



# Audience Questions

## Panel Contact Information

Bryan Heath: [bheath@loupaving.com](mailto:bheath@loupaving.com)

Dylan Murphy: [DMurphy@atsconstruction.com](mailto:DMurphy@atsconstruction.com)

Seth Renfro: [SethR@ScottysContracting.com](mailto:SethR@ScottysContracting.com)

Josh Withrow: [joshua.withrow@ky.gov](mailto:joshua.withrow@ky.gov)

